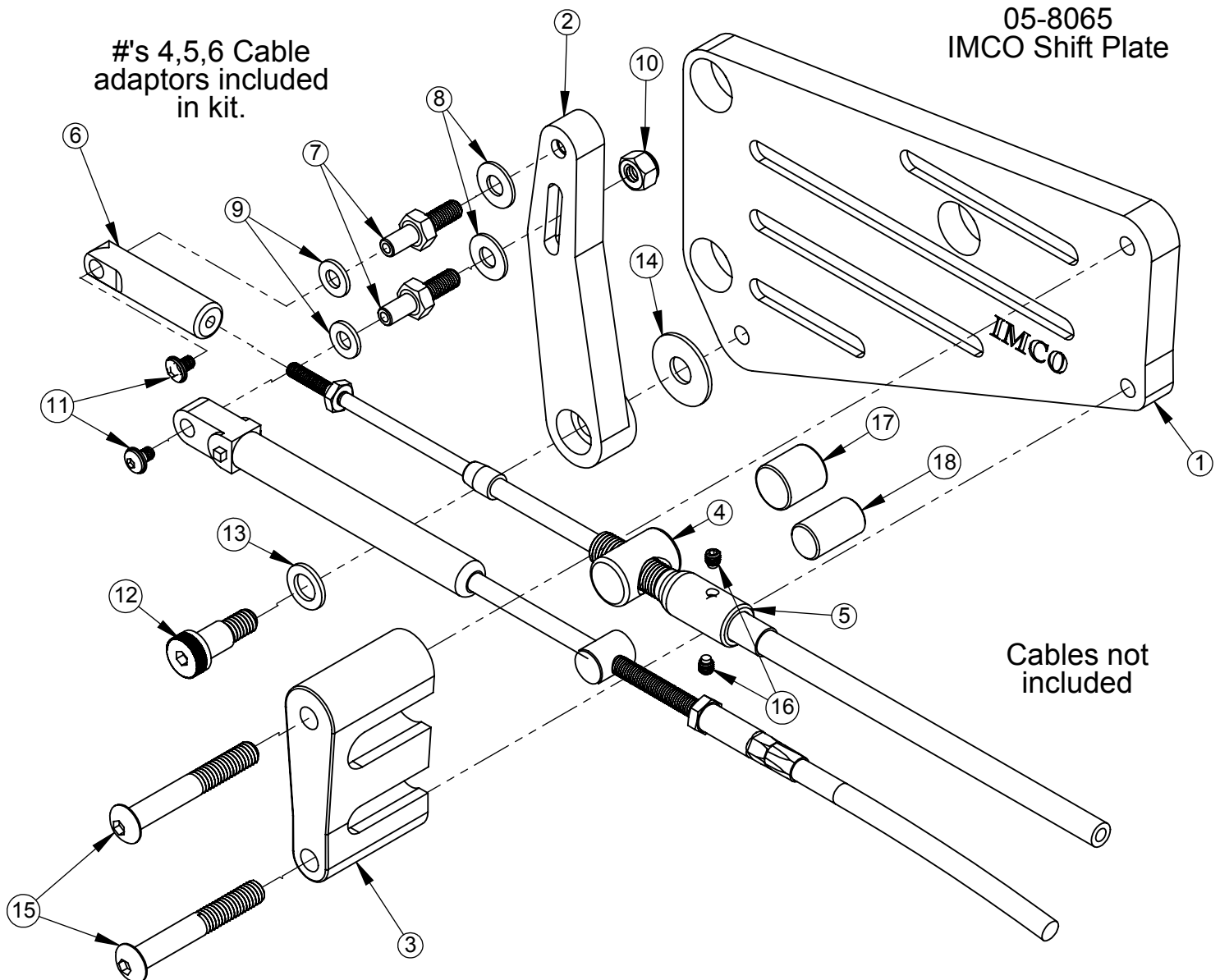


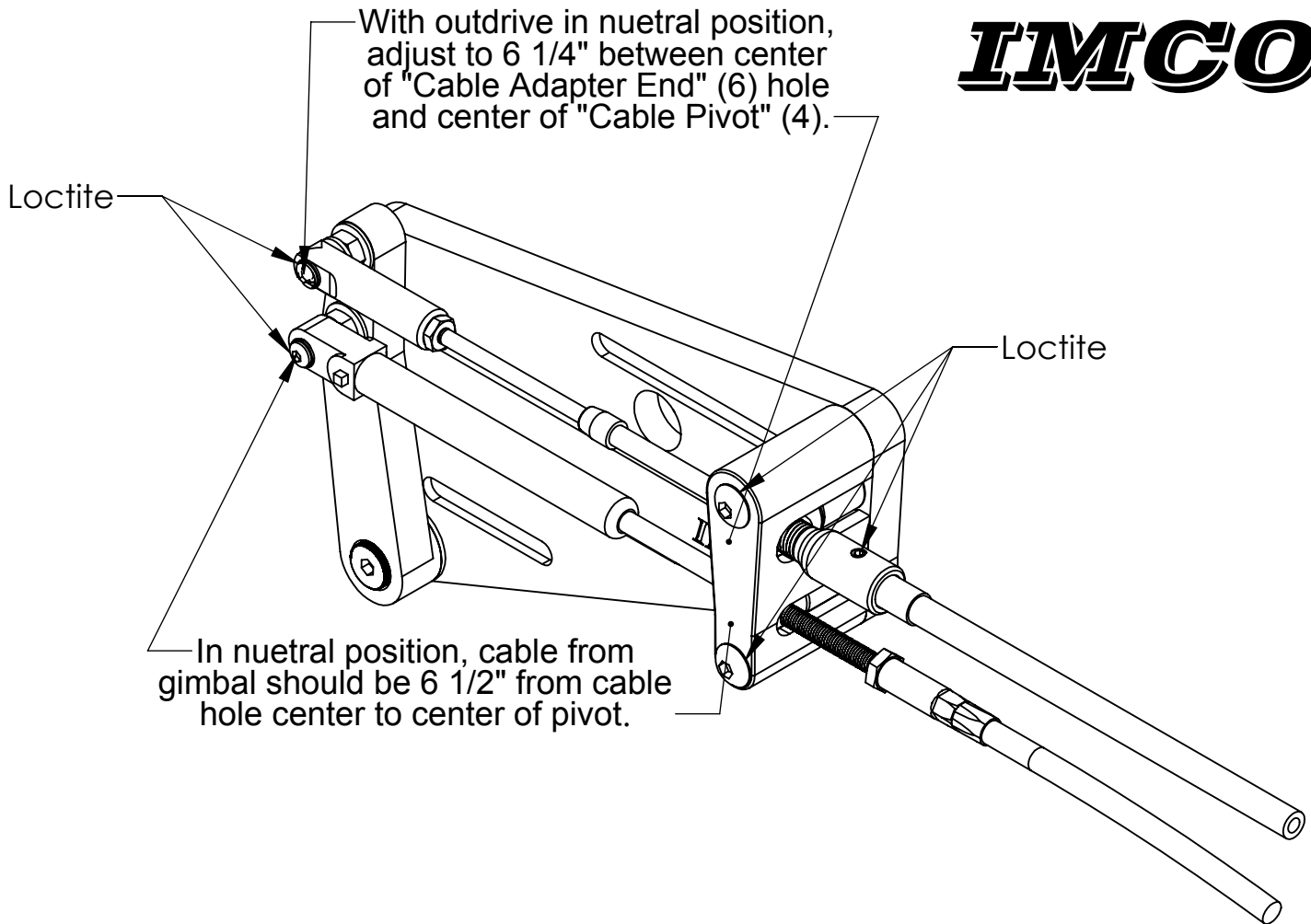
IMCO

05-8065
IMCO Shift Plate



05-8065			
Item	Description	Qty	Part Number
1	Shift Plate	1	05-7010
2	Lever Arm	1	05-7015
3	Cable Clamp	1	05-7020
4	Cable Pivot	1	05-2450
5	Cable Adjustment Sleeve	1	05-6110
6	Cable Adaptor End	1	05-7025
7	Lever Arm Stud	2	05-6160
8	1/4" SAE Flat Washer S/S	2	08-120600001
9	1/4" AN Flat Washer S/S	1	08-100600001
10	1/4-20 Nylock Nut S/S	1	08-080604001
11	8-32 x 1/4" Flange Button Socket Cap S/S	2	08-040705131
12	3/8 x 1/2" Shoulder Bolt S/S	1	08-140705041
13	3/8" x 5/8" Nylon Washer	1	08-100800005
14	3/8" x 1" Nylon Washer	1	08-120800005
15	5/16-18 x 2 1/4" Button Socket Cap S/S	2	08-040705131
16	10-32 x 3/16" Socket Set Screw S/S	2	08-050401021
17	Black Nylon 5/8" Rod	1	05-2076
18	Black Nylon 1/2" Rod	1	05-2075

See back page
for instructions.



1. Install *Cable Adjustment Sleeve* (5) and *Cable Pivot* (4) on control cable.
2. Adjust both control cable and gimbal shift cable to proper length. Control cable can be adjusted using either the *Cable Adapter End* (6) or the *Cable Pivot* (4).
3. Place cables *Cable Clamp* (3) and install *Black Nylon 5/8" Rod* (17) in top slot. Install *Black Nylon 1/2" Rod* (18) in bottom slot.
4. Install *Cable Clamp* (3) on *Billet Shift Plate* (1) with 2 *5/16-18 x 2 1/4" Button Socket Cap screws* (15).
5. Place cable ends over *Lever Arm Studs* (7) and install *8-32 x 1/4" Flange Button Socket Cap screws* (11).
6. **Caution: When on trailer always remove propeller before shifting drive.**
7. **Test shifting to insure proper neutral, full forward and full reverse is achieved.**
8. Apply loctite to fasteners shown above.

510 East Arrow Hwy
San Dimas, CA 91773
(800) 899-8058
(909) 592-6162
www.imcomarine.com
info@imcomarine.com